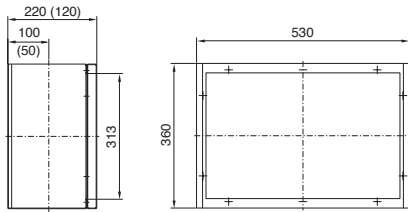
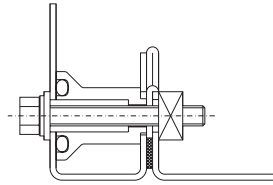


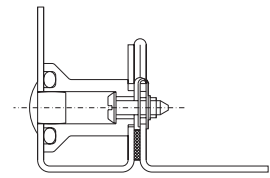
### Operating housing



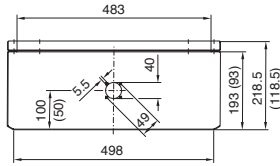
Hexhead screw external



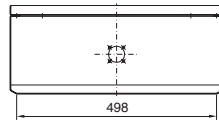
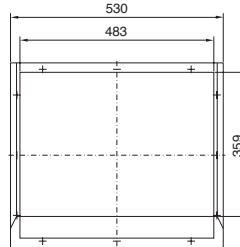
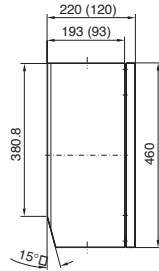
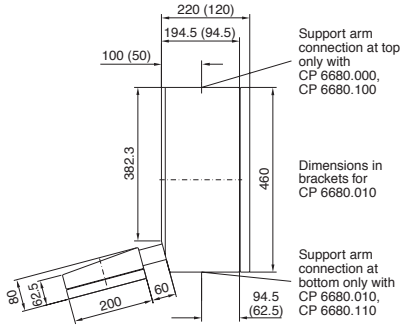
Screw, internal with plastic plugs



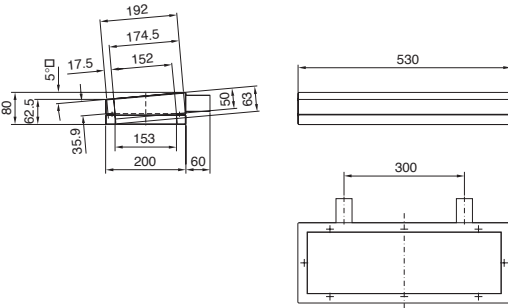
Support arm connection at bottom by rotating the enclosure. Dimensions in brackets for CP 6681.000



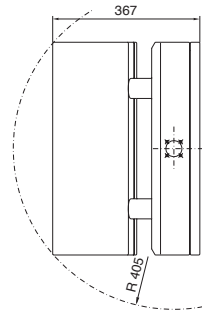
### Operating and keyboard housing



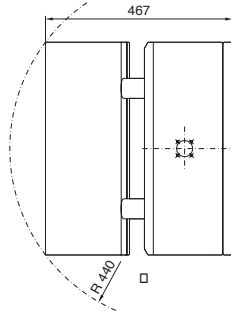
### Keyboard housing



Top view  
Depth 4.7"/120 mm



Top view  
Depth 8.7"/220 mm

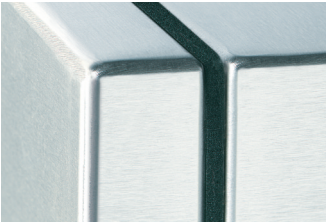


		PU	Premium Panel					
			With keyboard housing				Without keyboard housing	
Part No. CP		1	6680.000	6680.010	6680.100	6680.110	6681.000	6681.100
Height	Operating housing		18.1/460				14.2/360	
inches/mm	Keyboard housing		7.9/200				-	
Width			20.9/530					
Depth	Operating housing		4.7/120		8.7/220		4.7/120	8.7/220
inches/mm	Keyboard housing		63/80					
For installation plate	Operating housing		7 U/310 mm x 19/482.6 mm					
H x W	Keyboard housing		4 U/177 mm x 19/482.6 mm					
Installation depth	Operating housing		4.5/115		8.5/215		4.5/115	8.5/215
inches/mm	Keyboard housing		Front 2.9/58 Rear 2.5/63					
Support arm connection			Top	Bottom	Top	Bottom	Top, bottom by turning the housing	

### Accessories

Rear wall retainer CP	2	6682.000
-----------------------	---	----------

\* To order premium panel in type 316 stainless steel use Part No. CP 663X.XXX, in type 304 use Part No. CP 664X.XXX. Lead times upon request.



Easy-to-clean exterior gasket.



Cable entry into the keyboard housing through the connecting duct to the operating housing.



**Material:**

Stainless steel type 304

**Finish:**

Brushed, grain 240

**Protection ratings:**

IP 69K to DIN 40 050-9/5.93



**Rittal Service:**

Other dimensions or other housings with this sealing design available on request. Cutouts and holes to your specifications.

**A new layout, a new concept for seal/gasket and fastener**

- Safe for high-pressure cleaning (protection rating IP 69K). Seal is between two surfaces and is compressed optimally through screw fastening (see detailed drawing).
- Screw fastening for high standards in the areas of food and hygiene. Internally with plastic plugs or external hexhead screw.

- Best EMC conditions. Through the seal labyrinth, special EMC shielding is achieved in the housing.
- Internal rear wall retainer. With regard to hygiene, this solution is clearly superior to external hinges.
- Two cable ducts between the enclosures.



The rear wall hinge holds the rear wall in position when opened.  
**Part No. CP 6682.000.**



**Pendant arm system**  
see Handbook 30, page 276.